

FEATURE GUIDE

Livewire™

FEATURE GUIDE

Livewire

TABLE OF CONTENTS

Introduction	3
Product Description	3
Features	3
Continuous Full-Server Protection with Livewire	3
Easy implementation and management	3
Livewire Console	3
Push Install	3
Snapshot Support	3
Reduce the Time to Recover	3
Supports dissimilar hardware	3
Supports virtual to physical and physical to virtual environments	3
Broad Application Support	4
Virtual Recovery Server Automation	4
Double-Take Software Headquarters	5
Double-Take Software Sales	5
Sales and Support Outside the US	5
About Double-Take® Software	5

Introduction

Product Description

Livewire™ is a streamlined, full server data protection solution that reduces costs for businesses by simplifying installation and restoration. A well-organized user interface makes Livewire easy for non-technical staff to install and maintain. Once installed, Livewire continuously replicates changes to data, applications, and the source server's operating system, protecting the entire server. When it's time to recover, Livewire allows you to configure and perform full-server recovery quickly, to physically dissimilar hardware or virtual servers, with added validation steps to make sure recovery will go as planned. Livewire can also be used to migrate a server to different hardware, allowing you to use licenses for disaster recovery.

Features

Continuous Full-Server Protection with Livewire

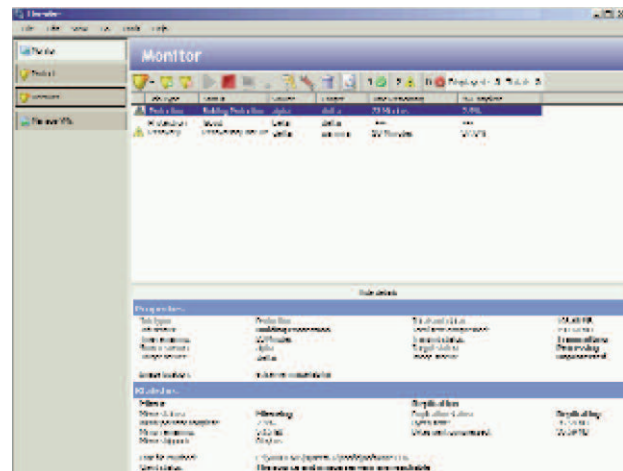
Livewire is built on Double-Take technology, the world's most relied-upon solution for accessible and affordable data protection solutions for disaster recovery, and centralized backup.

Easy implementation and management

Additions to the Livewire Management Console provide an easy-to-follow wizard for creating a connection that protects the entire server. In certain circumstances, not every volume on a server needs protected. Livewire provides the option to exclude one or more data volumes at either protection or recovery time.

Livewire Console

The Livewire Management Console allows you to quickly and easily configure, manage and perform recovery from a single interface, including validation steps that insure recovery goes as planned. Validation compares the image of the source server to the actual recovery server then alerts you of potential problems. The Livewire Management Console is designed to support management of enterprise-sized implementations. A single monitoring screen can show all full-server protections and recoveries across the enterprise with full status sorting and filtering capabilities. Jobs are categorized into protected, warning, and error states for quick identification of needed interaction.



Push Install

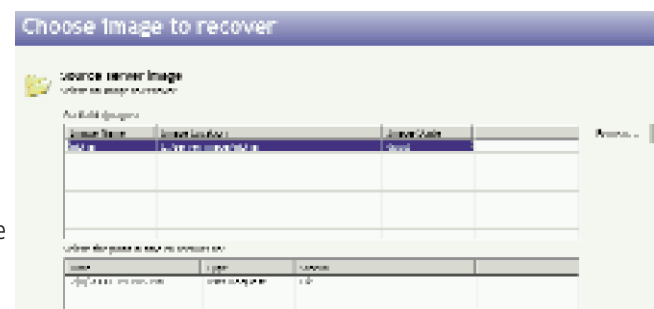
The Livewire Management Console pushes the Livewire agent to the recovery server if necessary, eliminating the need to have Livewire pre-installed on the recovery server.

Snapshot Support

Livewire integrates with Microsoft Volume Shadow Copy Service to allow you to schedule and recover from up to 512 point-in-time copies of data on your Livewire target.

Reduce the Time to Recover

When a system volume or entire server fails, recovery of both system state and data can be performed from the Livewire Console. This reduces the number of steps and time needed to recover a server to its original state, improving achievable recovery time objectives (RTO).



Supports dissimilar hardware

The recovery process can account for a variety of differences between the original source and recovery server, prohibit incompatible differences, and warn the user of possible performance degradations after recovery.

Supports virtual to physical and physical to virtual environments

Livewire replicates between any configuration of physical and virtual systems.

Broad Application Support

Livewire protects the entire server so there is no need for specialized application support. Livewire supports most business-critical applications.

Virtual Recovery Server Automation

Virtual infrastructure can make disaster recovery more affordable and easier to manage. Livewire can automate creation of the recovery VMware ESX server™.

About Double-Take® Software

Headquartered in Southborough, Massachusetts, Double-Take® Software (Nasdaq: DBTK) is a leading provider of affordable software for recoverability, including continuous data replication, application availability and system state protection. Double-Take Software products and services enable customers to protect and recover business-critical data and applications such as Microsoft Exchange, SQL, and SharePoint in both physical and virtual environments. With its unparalleled partner programs, technical support, and professional services, Double-Take Software is the solution of choice for more than ten thousand customers worldwide, from SMEs to the Fortune 500. Information about Double-Take Software's products and services can be found at www.doubletake.com.

Manage your subscription to eNews. Visit: www.doubletake.com/subscribe

Double-Take Software Headquarters

257 Turnpike Road
Southborough, MA 01772
Phone: +1-800-964-0185 or +1-508-229-8483
Fax: +1-508-229-0866

Double-Take Software Sales

8470 Allison Pointe Blvd. Suite 300
Indianapolis, IN 46250
Phone: +1-888-674-9495 or +1-317-598-0185
Fax: +1-317-598-0187

Sales and Support Outside the US

saleseu@doubletake.com
support@doubletake.com

Double-Take Software EMEA
+33 (0) 1 4777 0500
saleseu@doubletake.com

Sales in UK and Ireland
Tel: + 44 (0) 1905 745711 saleseu@doubletake.com
Sales in Germany Tel: +49 69 6897776-66
salesgermany@doubletake.com

Sales in Benelux
Tel: + 32 2 209 16 16 salesblx@doubletake.com

Sales in Latin America
+1.317.572.1859 or +1.888.674.9495
saleslatam@doubletake.com

Sales in Asia Pacific. Japan, India and Australia/New Zealand, excluding China.
+65 6866 3308
salesap@doubletake.com

Sales in China
Tel: +86 21 6109 5747
salesap@doubletake.com

Warning: No part of this document may be reproduced or transmitted in any form or by any means, electronic, or mechanical, for any reason, without the express written permission of Double-Take Software, Inc. The information in this document is subject to change without notice. Although we try to provide quality information, Double-Take Software makes no claims, promises or guarantees about the accuracy, completeness, or adequacy of the information contained in this document. Companies, names and data used in examples herein are hypothetical and/or fictitious unless otherwise stated.



Get the standard today: www.doubletake.com or 888-674-9495

